

PROTECTING ARMATURES AND GAUGE SLIDES

ACCESSORIES

Connection heads

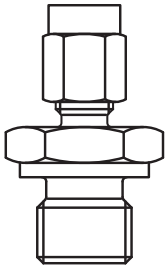
drawing	form	material	dim. D mm	protection system	SAB-type	weight approx. kg	item no.
	BA	light metal	Ø 15,8	IP 53	KE 021	0,14	lower part T030-031-667 cap T030-007-276
		diecast	M 24 x 1,5	IP 54	KE 122	0,127	lower part T030-030-531 cap T030-007-276
	DAN-Z	light metal	Ø 15,8	IP 53	KE 063	0,254	T030-007-237
		diecast	M 24 x 1,5	IP 65	KE 064	0,232	T030-007-238
	DAN-S	light metal	Ø 15,3	IP 53	KE 065	0,27	T030-037-035
		diecast	M 24 x 1,5	IP 65	KE 066	0,243	T030-007-236
	DAN-WZ	light metal	Ø 15,3	IP 53	KE 201	0,31	T030-007-239
		diecast	M 24 x 1,5	IP 65	KE 202	0,294	T030-007-240
	DAN-WS	light metal	Ø 15,3	IP 53	KE 203	0,32	T030-007-241
		diecast	M 24 x 1,5	IP 65	KE 204	0,303	T030-007-242
	BNK	polyamide, black	Ø 15,8	IP 53	KK 028	0,083	T030-007-226
			M 24 x 1,5	IP 54	KK 029	0,071	T030-007-227

PROTECTING ARMATURES AND GAUGE SLIDES

ACCESSORIES

Clamp screw connections made of steel 1.0718 for...

MTE ø mm	thread	with pressure ring made of PTFE item no.
1,5	M 8 x 1	T 025-007-148
2,0	M 8 x 1	T 025-007-151
3,0	M 8 x 1	T 025-000-681
4,5	G 1/4 A	T 025-007-157
6,0	G 1/4 A	T 025-000-685



Clamp screw connections made of steel 1.0718 for...

MTE ø mm	thread	with tapered ring made of stainless steel 1.4571 item no.
1,5	M 8 x 1	T 025-007-147
2,0	M 8 x 1	T 025-007-150
3,0	M 8 x 1	T 025-000-680
4,5	G 1/4 A	T 025-007-156
6,0	G 1/4 A	T 025-000-684

Clamp screw connections made of stainless steel 1.4571 for...

MTE ø mm	thread	with pressure ring made of PTFE item no.
1,5	M 8 x 1	T 025-007-146
2,0	M 8 x 1	T 025-007-149
3,0	M 8 x 1	T 025-007-153
4,5	G 1/4 A	T 025-007-155
6,0	G 1/4 A	T 025-007-160

Note:

Clamp screw connections with a thrust collar made of PTFE are appropriate for temp. up to +200°C and for pressures up to 10 bar. Later loosening and moving is possible.

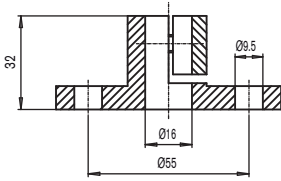
Clamp screw connections with a tapered ring made of steel or stainless steel are appropriate for temp. above + 200 °C and for pressures up to 40 bar. By tightening the screw connection, the tapered ring is fixed on the tube and can't be loosened anymore. Therefore, later loosening isn't possible at all.

Clamp screw connections made of stainless steel 1.4571 for...

MTE ø mm	thread	with tapered ring made of stainless steel 1.4571 item no.
1,5	M 8 x 1	T 025-007-145
3,0	M 8 x 1	T 025-007-152
4,5	G 1/4 A	T 025-007-154
6,0	G 1/4 A	T 025-007-159

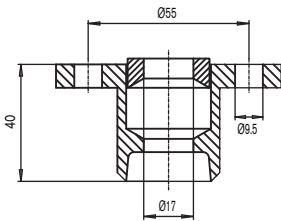
PROTECTING ARMATURES AND GAUGE SLIDES

ACCESSORIES



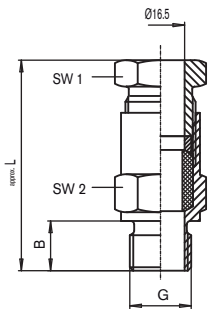
Stop flange acc. to DIN 43734
(p.e. construction form T411 and T413 on page 10)

for tube-Ø mm	material	SAB type	weight approx. kg	item no.
15,0	GTW-35	B 01	0,23	T 026-000-687



Mating flange acc. to DIN 43734
(p.e. construction form T411 and T413 on page 10)

for tube-Ø mm	material	SAB type	weight approx. kg	item no.
15,0	GTW-S38	B 10	0,28	T 026-006-124

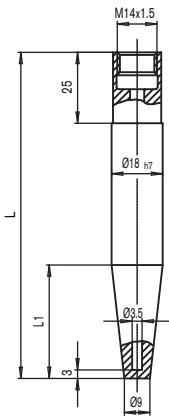


Adjustable screw socket, gas tight up to 1 bar made of mat. no. 1.0711 nickel plated (p.e. construction form T411 and T413 on page 10)

for tube-Ø mm	thread G	dim. B mm	dim. SW1 mm	dim. SW2 mm	dim. - L mm	SAB type	weight approx. kg	item no.
15,0	G 1/2 A	17	27	27	78	B 131	0,25	T 055-000-759
15,0	G 3/4 A	20	32	30	80	B 132 A	0,32	T 055-000-760
15,0	G 1/2 A	20	41	36	88	B 133 A	0,45	T 055-008-538

PROTECTING ARMATURES AND GAUGE SLIDES

ACCESSORIES

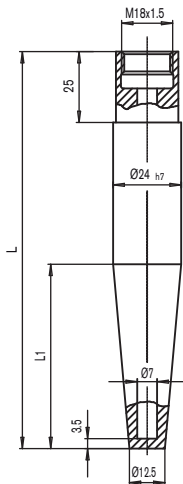


to T451

welding protecting tubes form D acc. to DIN 43763 for high pressures

form acc. to DIN	immersion length L mm	immersion length L1 mm	material no.	weight approx. kg	item no.
D4S - L D5S - L	140 115	65 40	1.7335 1.7335	0,20 0,17	T 052-011-430 T 052-011-431
D4S - M D5S - M	140 115	65 40	1.7380 1.7380	0,20 0,17	T 052-013-738 T 052-013-739
D4S - K D5S - K	140 115	65 40	1.4571 1.4571	0,20 0,17	T 052-011-428 T 052-011-429

* For all protecting tube materials there are acceptance certificates acc. to DIN 10204-3.1 B.
Welding protecting tubes with acceptance certificate 3.1 A (TÜV) acc. to DIN EN 10204 on request!

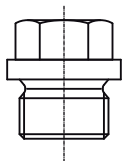


to T450

welding protecting tubes form DS acc. to DIN 43763 for high pressures

form acc. to DIN	immersion length L mm	immersion length L1 mm	material no.	weight approx. kg	item no.
D1 - L D2 - L D4 - L D5 - L	140 200 200 260	65 125 65 125	1.7335 1.7335 1.7335 1.7335	0,34 0,44 0,53 0,64	T 052-007-862 T 052-007-863 T 052-007-864 T 052-007-865
D1 - M D2 - M D4 - M D5 - M	140 200 200 260	65 125 65 125	1.7380 1.7380 1.7380 1.7380	0,34 0,44 0,53 0,64	T 052-007-866 T 052-007-867 T 052-007-868 T 052-007-869
D1 - K D2 - K D4 - K D5 - K	140 200 200 260	65 125 65 125	1.4571 1.4571 1.4571 1.4571	0,34 0,44 0,53 0,64	T 052-007-857 T 052-007-858 T 052-007-859 T 052-007-860

* For all protecting tube materials there are acceptance certificates acc. to DIN EN 10204-3.1 B.
Welding protecting tubes with acceptance certificate 3.1 A (TÜV) acc. to DIN EN 10204 on request!



Screw plugs for above mentioned welding sleeves

thread acc. to 910	material	dimensions mm	item no.
M 18 x 1,5 M 14 x 1,5	nickel plated steel	0,05 0,03	T 026-007-199 T 026-007-198

Conical nipple for above mentioned welding sleeves

acc. to DIN	material	dimensions mm	item no.
form C 7603 form C 7603	Cu/KFC Cu/KFC	Ø 18 x 22 x 2 Ø 14 x 18 x 2	T 020-005-973 T 020-005-976

Please note that not all types are available from stock and that there are possibly min. order quantities!